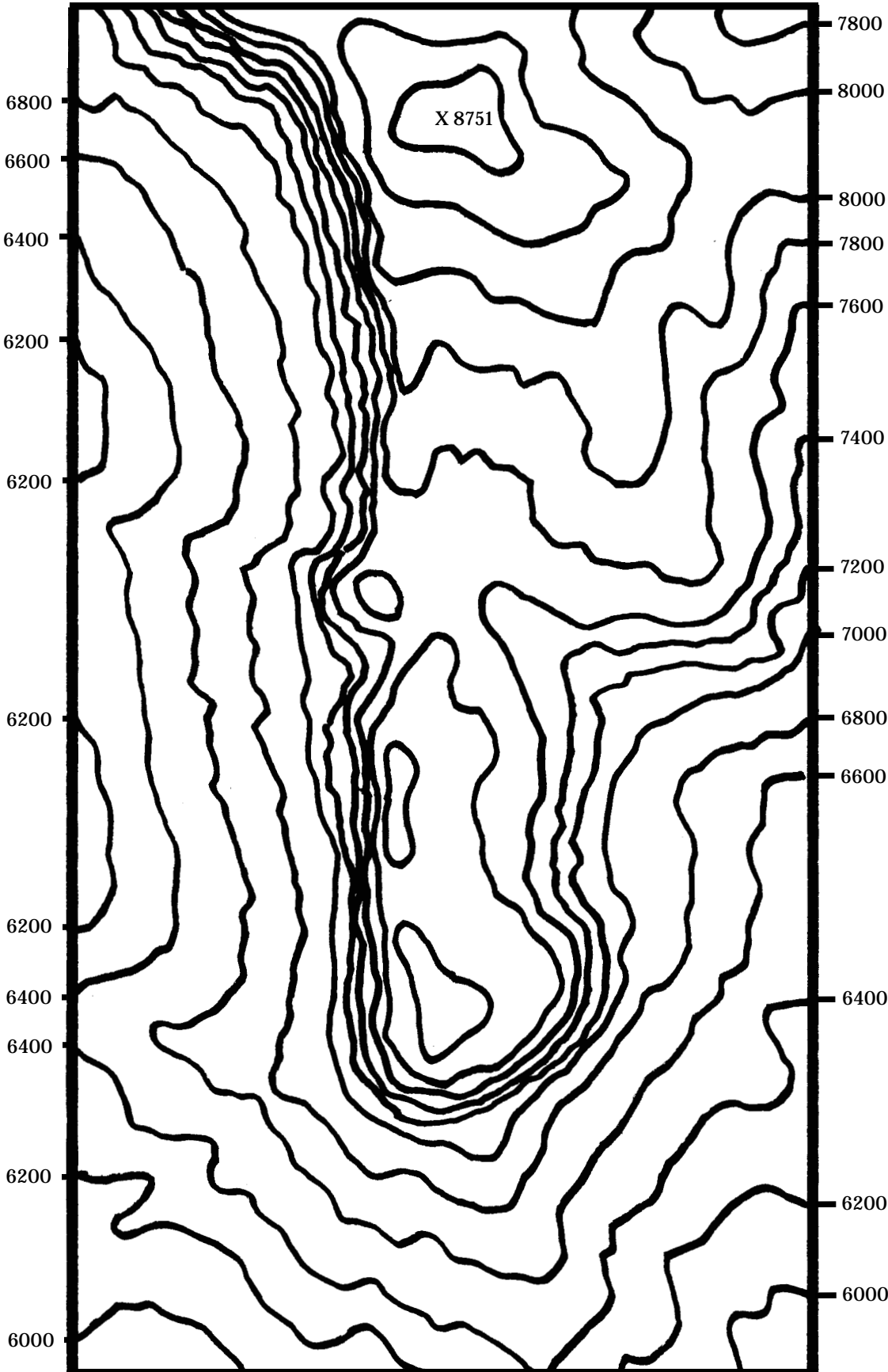
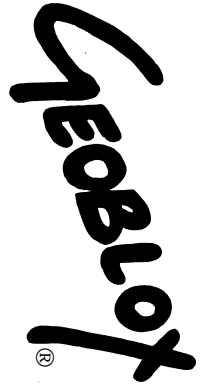


Covers TEKS: §112.19. (b)(8)(B)
 §112.16. (b)(7)(B) §112.20. (b)(9)(C)
 §112.18. (b)(10)(B) §112.36. (c)(11)(A)

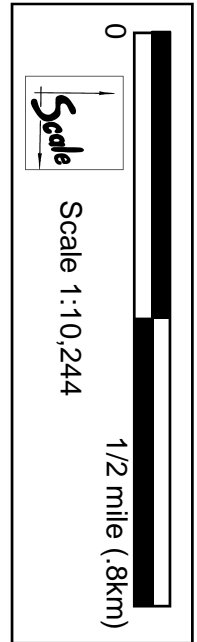
Illustrated instructions for building Geoblox landforms:

www.geoblox.com/topo.html

Copyright © 2010 John Koonz



The **Guadalupe Mountains** started to form 250 million years ago during the Permian Period when an algal reef began to grow at the edge of an ancient sea. For millions of years the reef grew upwards and farther offshore. Eventually, sea levels dropped and the 1800' (600 m) deep basin seaward of the reef filled in with evaporite sediments. The reef lay buried until about 26 MYA when regional uplifting and faulting raised the reef. Erosion removed the overlying salt layers revealing one of the most studied and important fossil reefs in the world. At the summit of Guadalupe Peak hikers can discover fossils that once lived below sea level.



(If 1/4" thick cardboard is used to build this model, there will be NO vertical exaggeration.)